



# INFO SERVICE

UNION TANK Eckstein GmbH & Co. KG

December 2010

## Quick Guide – UTA Service for Sat-Nav Devices with POIbase.com

### Access via UTA Exclusive Section

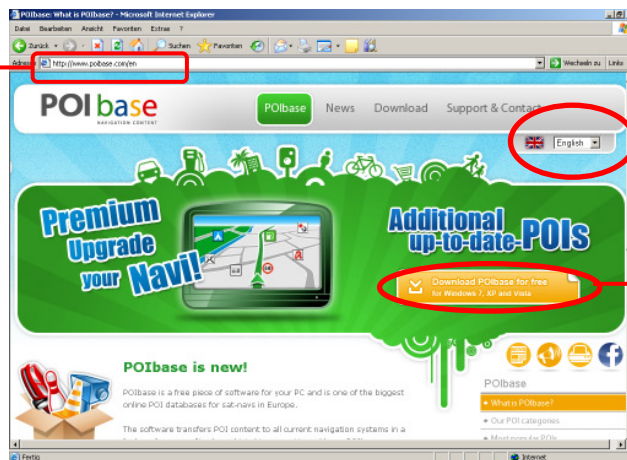
Infopage about UTA Service for sat-nav devices under "Station Finder"



Page is linked to www.POIbase.com

### Information regarding the POIbase website

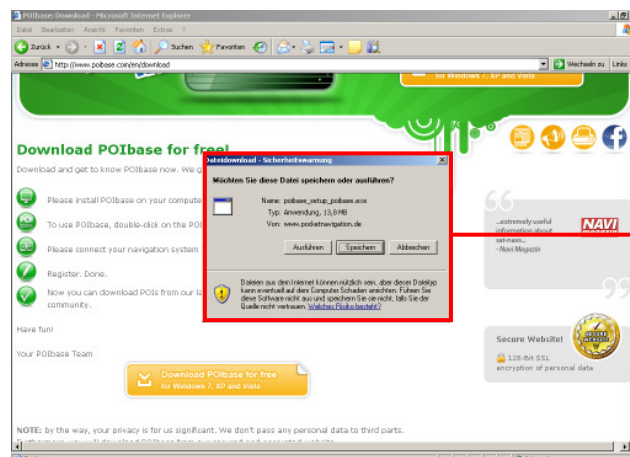
URL: www.POIbase.com



The page is available in different languages: (de, en, es, fr, it)

Click here to download the POIbase software

### Software download



First save the software on the PC and start running/installing it.

## Software's functions

### I. Add UTA acceptance points

- 1) If the sat-nav is connected with the PC, data can be downloaded on the device by clicking on „Download POIs“.
- 2) The GPS data of UTA petrol stations are available in the section „Car & Traffic“
- 3) Then click on „UTA Fuel Cards“,
- 4) choose appropriate UTA list\* and
- 5) confirm with click on Synchronize

The screenshots illustrate the following steps:

- Step 1:** Home page with 'Download POIs' button highlighted.
- Step 2:** 'Download POIs' page with 'Car & Traffic' button highlighted.
- Step 3:** 'Car & Traffic' page with 'UTA Tankkarte' button highlighted.
- Step 4:** 'UTA Fuel Cards' page with a table of fuel card categories highlighted.
- Step 5:** Bottom navigation bar with 'Synchronize' button highlighted.

POI category	Location filter	No. of POIs	Country	Add all	Remove all
UTA Tankkarte Deutschland Source: UNION TANK		9509 POIs	DE		
UTA Tankkarte Europa Source: UNION TANK		27929 POIs	EU		
UTA Tankkarte Full Select Card Source: UNION TANK		1613 POIs	EU		

\*Currently the following UTA lists can be downloaded:

- all UTA petrol stations (total Europe)
- UTA petrol stations (only Germany)
- UTA petrol stations with acceptance of Full Select Card

Further selections and lists are not planned yet.

## II. Change of Language Settings

The software is available in German, English, French, Italian, Dutch und Spanish.

- 1) Choose „settings“ in the main menu;
- 2) then click on „Language Settings“ and
- 3) choose the desired language.

The software has to be restarted in order adopt the chosen language.



## III. Technical Support

For any kinds of questions and/or support regarding installation, downloading of POIs, functions, etc. the support team of POIbase can be contacted. Contact information are shown in the software application.

